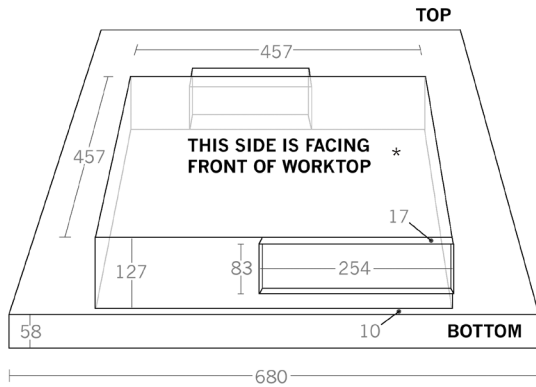


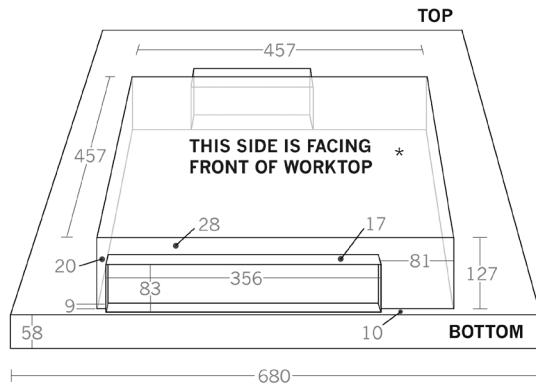
**WOLF<sup>®</sup>**

*A guide to  
Downdraft Ducting*

## Wolf Downdraft Measurements



**Wolf Downdraft DD30I**



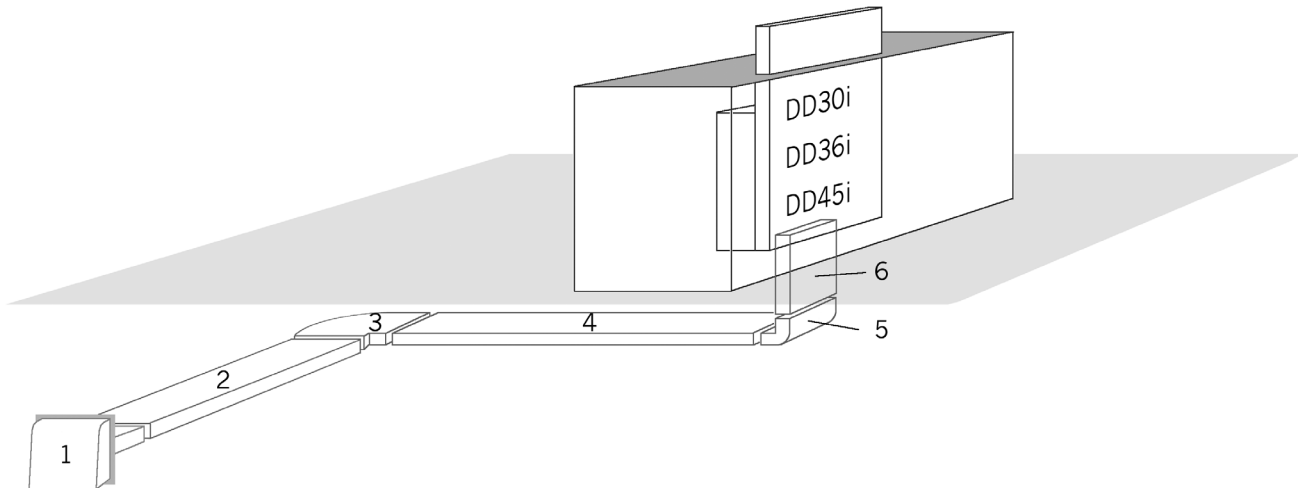
**Wolf Downdraft DD30R**

Shown are two examples of the ducting connection for a DD30I with an internal motor and a DD30R with a remote motor. The internal motor should run with galvanised duct measuring 83 x 254mm and the remote duct initially starts with 83 x 356mm transforming at some stage to 254mm round flexible duct to match and join with the remote motor. The ventilation variants are also applicable to the other downdraft models available.

\* The airbox can move 100mm left or right from the central line of the downdraft width. It can also be turned clockwise and anti-clockwise by 90°.

## Downdraft Ducting Examples

### Downdraft Installation with Internal Motor

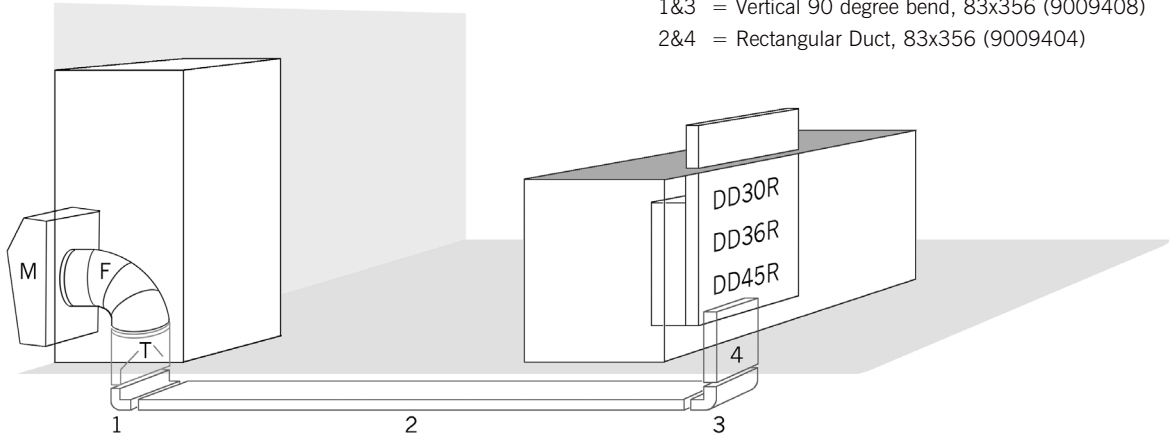


- 1 = Wall Cap, 83x254 (9009400)
- 2,4,6 = Rectangular Ducting, 83x254 (9009403)
- 3 = Horizontal 90 degree bend, 83x254 (9009405)
- 5 = Vertical 90 degree bend, 83x254 (9009406)

NOTE: All measurements are in millimeters

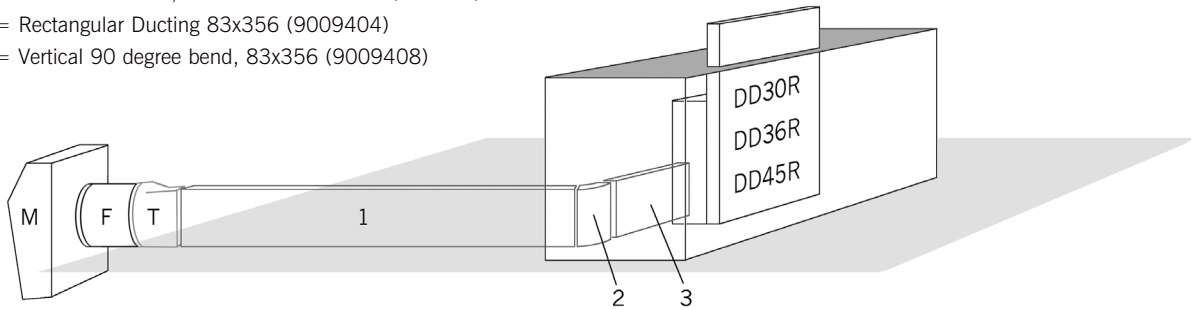
***Downdraft Installation with Remote Motor***

- M = Remote Motor (801641, 801642, 804701)
- F = Flexiduct 10"/254mm Round (9009450)
- T = Transition 14-10, 83x356 to 254 round (804706)
- 1&3 = Vertical 90 degree bend, 83x356 (9009408)
- 2&4 = Rectangular Duct, 83x356 (9009404)



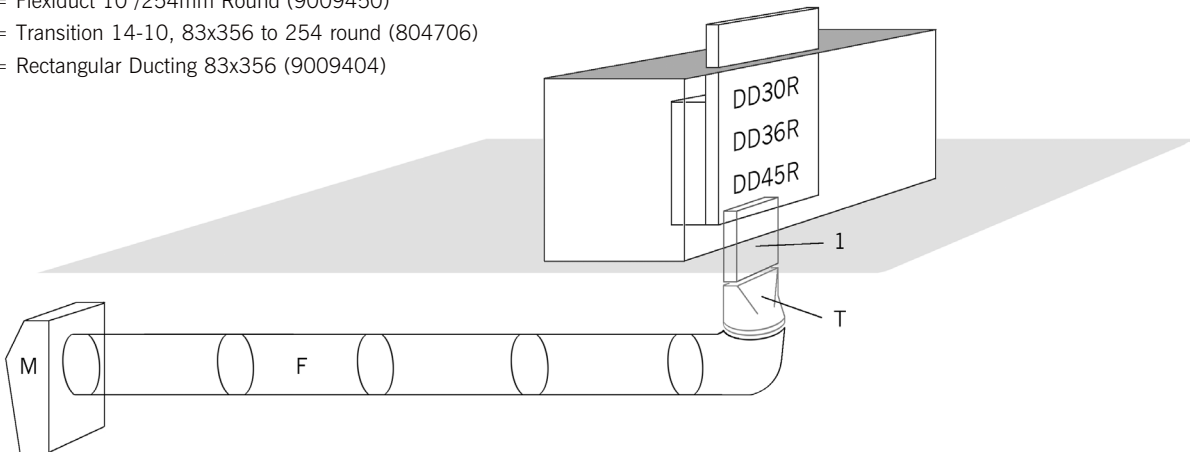
***Downdraft Installation with Remote Motor (ducting in side wall)***

- M = Remote Motor (801641, 801642, 804701)
- F = Flexiduct 10"/254mm Round (9009450)
- T = Transition 14-10, 83x356 to 254 round (804706)
- 1,3 = Rectangular Ducting 83x356 (9009404)
- 2 = Vertical 90 degree bend, 83x356 (9009408)



***Downdraft Installation with Remote Motor***

- M = Remote Motor (801641, 801642, 804701)
- F = Flexiduct 10"/254mm Round (9009450)
- T = Transition 14-10, 83x356 to 254 round (804706)
- 1 = Rectangular Ducting 83x356 (9009404)



## ***Galvanised Ducting for Downdraft Systems***

### ***Number Description***

Parts for downdraft installations with an INTERNAL motor

9009401	Outside Wall Cap with Non Return Vent 250 Round
9009400	Outside Wall Cap with Non Return Vent 83x254
9009403	2 Metre Length 83x254 Duct
9009415	Adjustable Connector for Internal Motor Downdrafts
9009405	Horizontal 90 Degree 83x254 Bend
9009406	Vertical 90 Degree 83x254 Bend
9009409	Horizontal 45 Degree 83x254 Bend
9009410	Vertical 45 Degree 83x254 Bend
9009413	Jointing Spigot 83x254

Parts for downdraft installations with an EXTERNAL motor

9009401	Outside Wall Cap with Non Return Vent 250 Round
9009404	2 Metre Length 83x356 Duct
9009416	Adjustable Connector for Remote Motor Downdrafts
9009414	Jointing Spigot 83x356
9009407	Horizontal 90 Degree 83x356 Bend
9009408	Vertical 90 Degree 83x356 Bend
9009411	Horizontal 45 Degree 83x356 Bend
9009412	Vertical 45 Degree 83x356 Bend

NOTES:

- Straight duct will interlock with all bends. All bends fit inside straight sections.
- Spigots are used to join together straight duct only.
- Connection to hood and downdraft units is recommended with self tapping screws and heavy duty duct tape. When joining bends a small section of straight must be used in between.
- Do not use rectangular ducting on anything other than downdraft installations.

### ***Transitions (Galvanised)***

<b><i>Number</i></b>	<b><i>Description</i></b>	<b><i>Model</i></b>
804706	83 x 356 to 250 Round Transition	All Downdrafts with Remote Motor
805085	83 x 254 to 250 Round Transition	All Downdrafts with Internal Motor

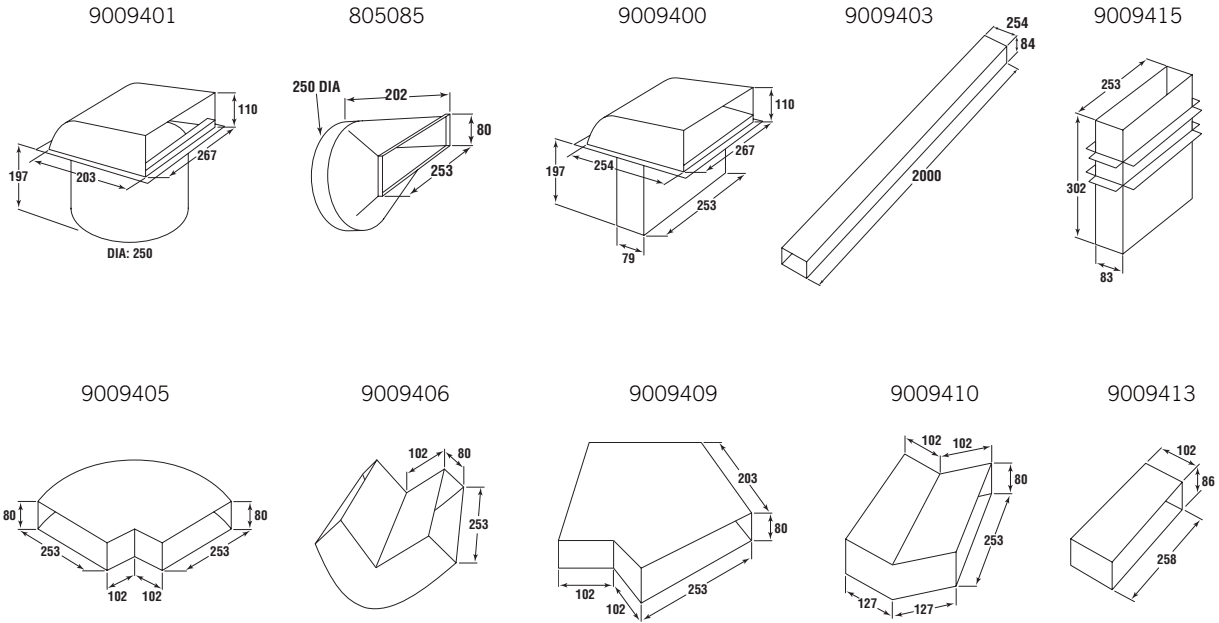
### ***Flexible Duct***

<b><i>Number</i></b>	<b><i>Description</i></b>	<b><i>Model</i></b>
9009450	10" flexiduct (254mm x 10m)	Selected Downdraft Installations

NOTE: All measurements are in millimeters

## Ducting and Transitions for Downdrafts (Galvanised)

Use below parts for downdraft installations with an INTERNAL motor



Use below parts for downdraft installations with an EXTERNAL motor

